

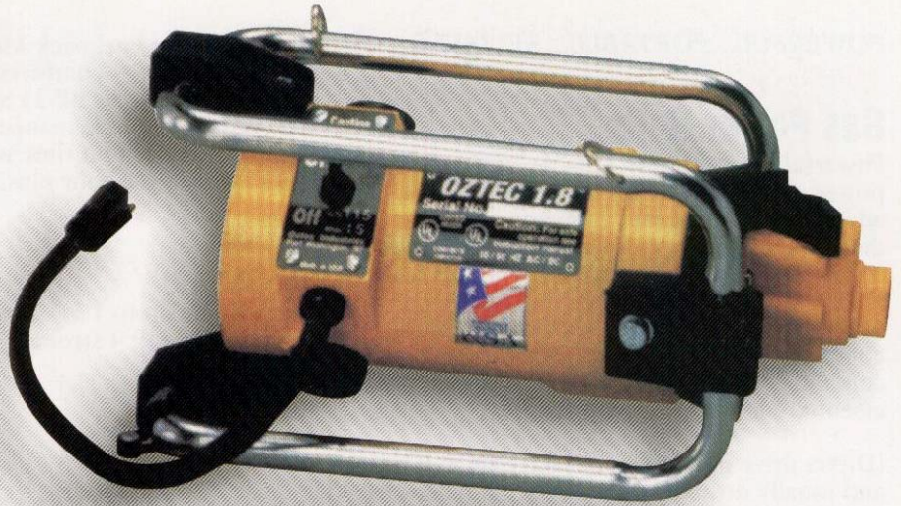
Power Units

OZTEC Power Units

All Oztec Power Units (gas and electric) run power heads 11,000 to 12,000 vpm. They never drop below 10,000vpm even in the lowest slump concrete (near 0) when maximum head size specifications (see page 6) are followed.

Electric Motors

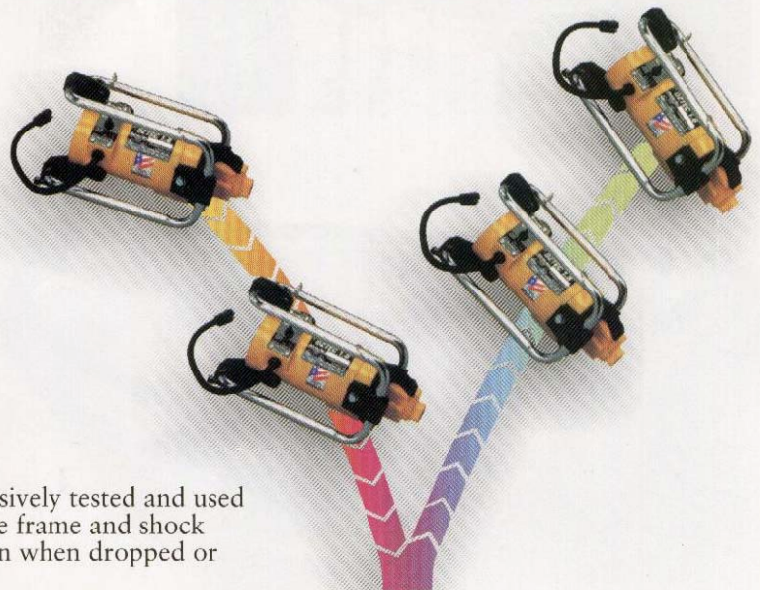
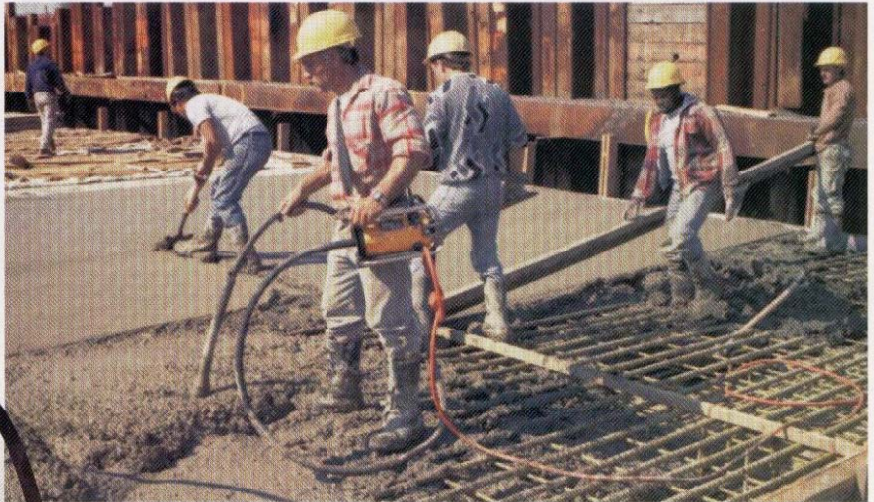
Oztec Electric motors are manufactured to exacting specifications to withstand the rough day to day abuses associated with construction sites. Lightweight, compact and fitted with our comfortable adjustable shoulder strap, this one man power unit will speed through the stiffest concrete. Using the Vibrator Selection Chart allows you to combine power units with any of Oztec's steel or rubber vibrator heads for maximum productivity.



4 Powerful Models			Maximum Head Size	
Model	Amps	HP	Steel	Rubber
1.2 OZ	9	1¼	1½"	None
1.8 OZ	15	1¾	1¾"	None
2.4 OZ	17	2¼	2"	2¾" short
3.2 OZ	19	3¼	2½"	2¾"

All Oztec power units come standard with the Quick Disconnect "QD" system. Changing shafts and heads on the job is a snap.

Oztec units meet all United States OSHA and Canadian safety standards.



Job Site Proven

Tough, Rugged, and Durable! Oztec's design has been extensively tested and used on-the-job for over thirty years. The wrap around protective frame and shock absorbers effectively protect Oztec motors from damage even when dropped or thrown from heights of over six feet.