

TXAS1 Air Scribe



- ★ Comes in convenient carrying case.
- ★ Equipped with a flexible hose and filter with a 3/8" NPT fitting.
- ★ Will write on a variety of materials.
- ★ Carbide-tipped stylus for longer life.
- ★ Hardened piston for longer life.
- ★ Steel housing for durability.
- ★ Adjustable throttle for a variety of jobs.
- ★ Made in the U.S.A.
- ★ Vibrating tip for all uses.

2

The Texas Pneumatic Air Scribe is lightweight and easy to operate. It is designed to write on a variety of materials such as steel, glass, plastic, and wood. It can be used for deburring, trimming and removing broken studs on small applications.

SPECIFICATIONS:

MODEL #	TXAS1
WEIGHT	13 OZ.
CFM CONSUMED LESS THAN	1 CFM
AIR INLET THRD SIZE (NPFT)	1/4"
HOSE SIZE	1/4" ID
OVERALL LENGTH	5"
MIN. SUPPLY AIR HOSE SIZE	3/8" ID
STYLUS PART #	TX-21019
SHIPPING WEIGHT	1.5 LBS.

Recommended Air Pressure 90 PSI

TXAS1 AIR SCRIBE REPAIR KIT

QTY	TPT#	TXAS1RK	CP# P-059264	DESCRIPTION
(1)	TX-21002		P-059919	"O" RING
(3)	TX-21003		A-082777	"O" RING
(1)	TX-21008		CA-092079	ROLL PIN
(3)	TX-21009		P-083076	"O" RING
(1)	TX-21012		P-083071	"O" RING
(1)	TX-21015		CA-055009	"O" RING
(1)	TX-21024		P-056380	FILTER CARTRIDGE

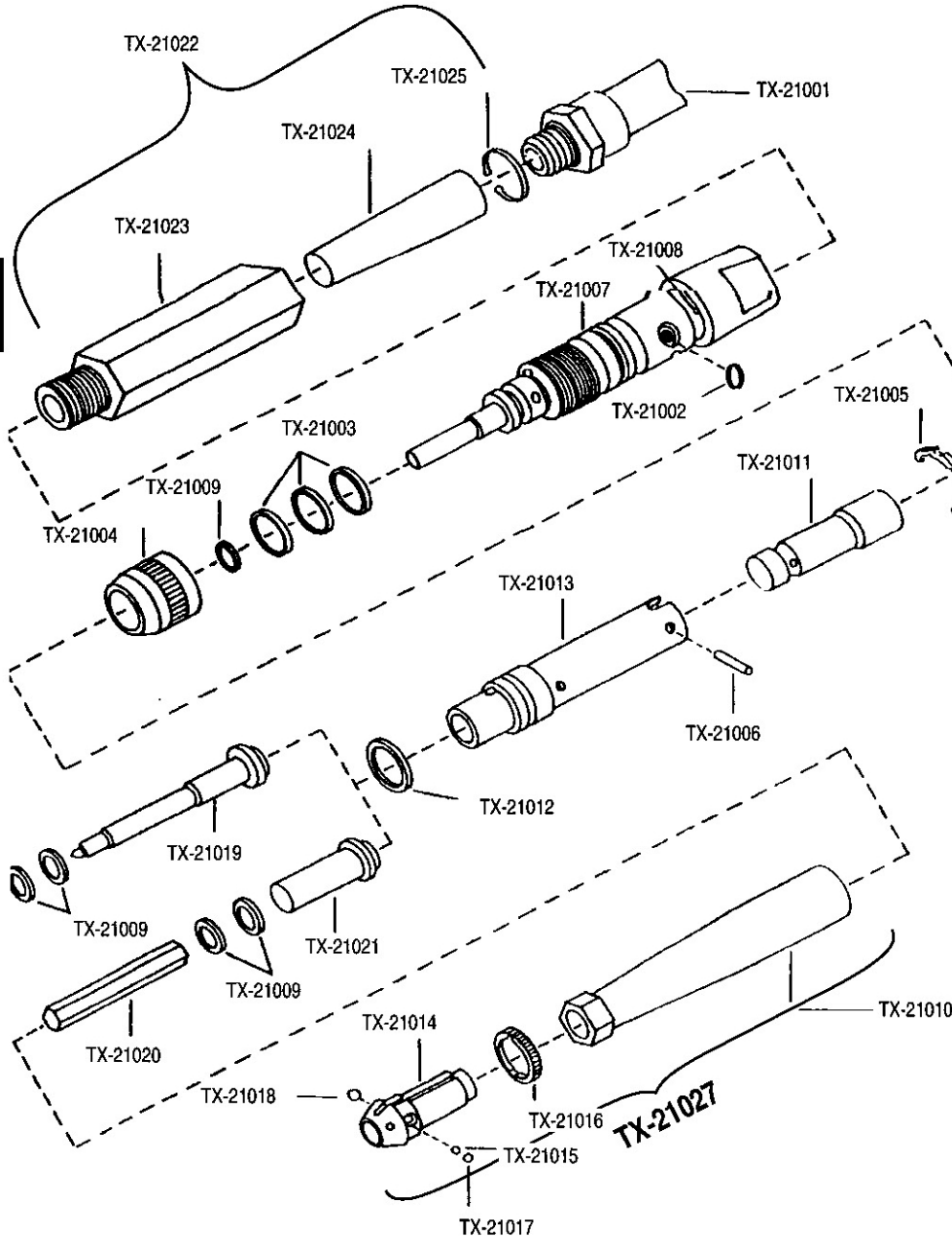
* SEE NEXT PAGE FOR BREAKDOWN

AIR SCRIBE CHISELS

TX-21019	STYLUS TIP
TX-21020R	ROUND NOSE CHISEL
TX-21020F	1/4" FLAT CHISEL
TX-21020B	BLANK CHISEL
TX-21020M	MOIL POINT

TXAS1 Air Scribe

2



TXAS1 REPLACEMENT PARTS

TX-21001	AIR LINE
TX-21002	"O" RING
TX-21003	"O" RING
TX-21004	VALVE SLEEVE
TX-21005	RETAINING RING
TX-21006	ROLL PIN - 3/32" x 3/8"
TX-21007	INLET
TX-21008	ROLL PIN - 1/16" x 3/16"
TX-21009	"O" RING
TX-21010	CYLINDER SLEEVE
TX-21011	PISTON
TX-21012	"O" RING
TX-21013	CYLINDER
TX-21014	BUSHING ACCESSORY
TX-21015	"O" RING
TX-21016	BALL LOCK RING
TX-21017	BALL
TX-21018	BALL
TX-21019	STYLUS
TX-21020R	ROUND NOSE CHISEL
	1/4" FLAT CHISEL
	BLANK CHISEL
	MOIL POINT
TX-21021	ANVIL (required for chisel use)
TX-21022	AIR FILTER ASSY (TX-21023, 21024, 21025)
TX-21023	AIR FILTER BODY
TX-21024	FILTER CARTRIDGE
TX-21025	RETAINING RING

NOTE: Anvil (TX-21021) required when using Chisel (TX-21020). All threads right hand

WARNING

Exposure to vibration may be harmful to hands and arms.

ASSEMBLY

1. When assembling inlet with sleeve valve, lubricate "O" ring (TX-21002) lightly with rubber lubricant or tool oil. Realign the sleeve valve to the "off" position to avoid cutting "O" ring and slide the sleeve onto the inlet.
2. Place the retaining ring (TX-21005) in the groove next to the shoulder retaining ring groove and the threads on the inlet.
3. To install the piston (TX-21011), clean the cylinder (TX-21013) and piston thoroughly. Drop the smaller end of the piston into the cylinder, align the transverse holes in the cylinder and the inlet, and carefully drive in the roll pin.
4. Drop the scribe into the cylinder sleeve with the small end first.
5. Screw together the inlet and cylinder sleeve until the cylinder sleeve touches the retaining ring.
6. Reattach the tool hose to the air scribe and the air supply line to the tool hose.
7. When assembly is complete, flush out the gum and foreign matter by directing the exhaust towards the ground and away from the operator.