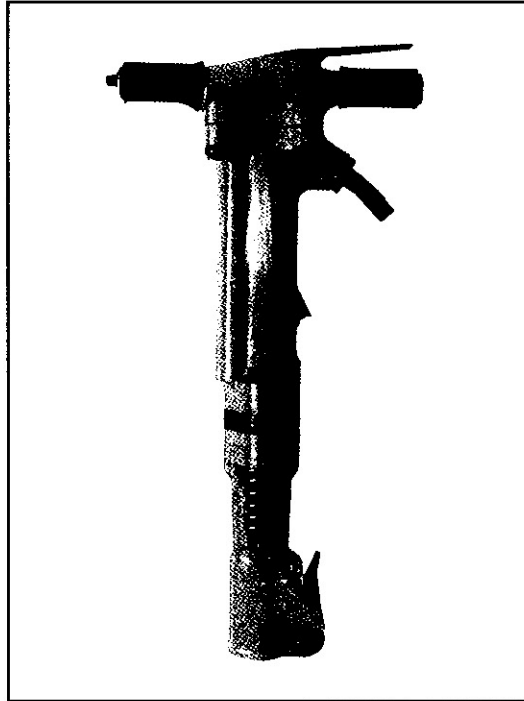


# 90# Paving Breaker

2

## TX90PB

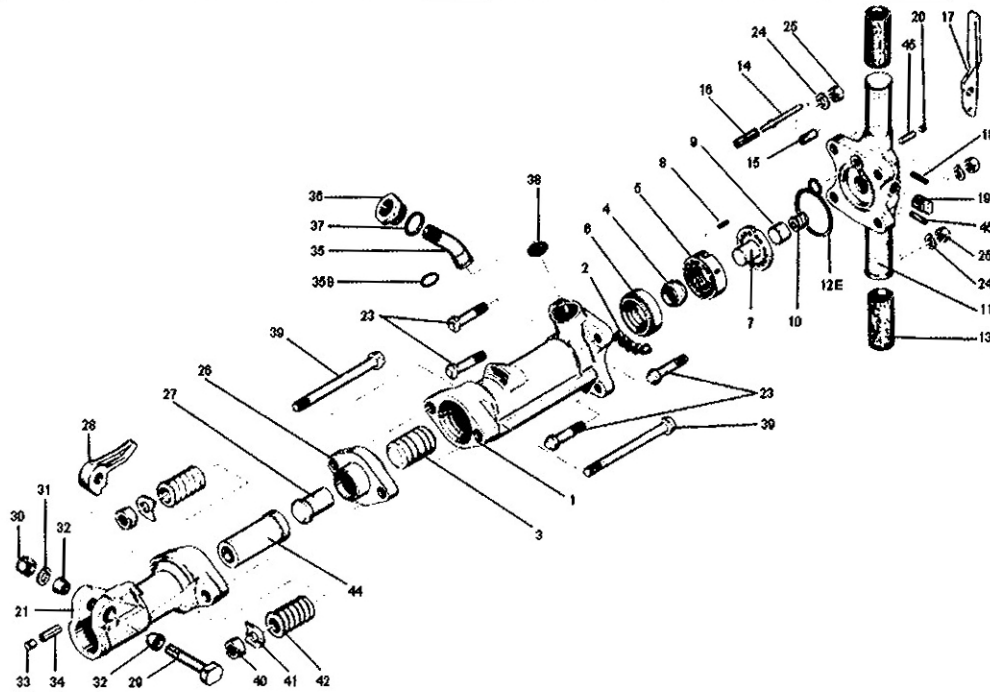


## 90# PAVING BREAKER

S P E C I F I C A T I O N S	Model#		TX90PB
	Net Weight	42 kg	92.5 lbs
	Length	730 mm	28.75 in
	Bore	66.67 mm	2.625 in
	Stroke	154 mm	6.0625 in
	Blows per Minute	1250	1250
	Chuck Sizes	32 x 154 mm	1 1/4 X 6 in
		28 x 154 mm	1 1/8 x 6 in
	Air Inlet (NPT)	19 mm	3/4 in
	Air Consumption*	2.1 m <sup>3</sup> /m	75 cfm

\* ESTIMATED

# 90# Paving Breaker



**2**

ITEM#	PART#	DESCRIPTION	ITEM#	PART#	DESCRIPTION
1	46895	Cylinder	26	46897	Tappet Seat
2	48385	Cylinder Plugs (5)	27	46896	Tappet
3	43484	Piston	28	43527	Steel Retainer (Forged)
4	43186	Automatic Valve	29	43524B	Steel Retainer Bolt
5	43480	Valve Chest	30	43525	Steel Retainer Bolt Nut
6	46894	Valve Seat	31	43007	Steel Retainer Lockwasher
7	43478	Valve Guide	32	43523	Retainer Bolt Bushing (Rubber)(2)
8	43477	Valve Dowel Pin	NS	45605	Retainer Bolt Bushing (Steel)(2)
9	43474	Backhead Plunger	33	43522	Steel Retainer Plunger
10	43475	Backhead Plunger Spring	34	43521	Retainer Plunger Spring
11	51973	Backhead Bare	35	43512	Air Inlet Swivel
NS	51974	Backhead Assbly. Complete	35B	45259	Air Inlet "O" Ring
12E	6180	Backhead "O" Ring	36	43169	Air Inlet Swivel Nut
NS	82907	Backhead Valve Port "O" Ring	37	91881	Swivel Nut "O" Ring
13	43476	Rubber Grip (2)	38	43510	Air Inlet Screen
14	46893	Throttle Valve	39	98438	Fronthead Bolt (2)
15	43395	Throttle Valve Sleeve	40	43414	Fronthead Bolt Nut (2)
16	43397	Throttle Valve Spring	41	91468	Fronthead Bolt Lockwasher (2)
17	43428	Throttle Lever	42	43412	Fronthead Bolt Spring (2)
18	43393	Throttle Lever Pin (2)	44	46898	Fronthead Bushing w/1 1/8" Hex
19	43399	Oil Reservoir Plug	44	46899	Fronthead Bushing w/1 1/4" Hex
20	68073	Oil Control Felt Plug	45	43473	Oil Control Felt
21	46900	Fronthead Bare	NS	91509	Fronthead w/1 1/8" Hex Bushing
23	43502	Backhead Bolt (4)	NS	91510	Fronthead w/1 1/4" Hex Bushing
24	43143	Backhead Bolt Lockwasher (4)	NS	46902	Fronthead Assy. w/1 1/8" Hex
25	43500	Backhead Bolt Nut (4)	NS	46903	Fronthead Assy. w/1 1/4" Hex