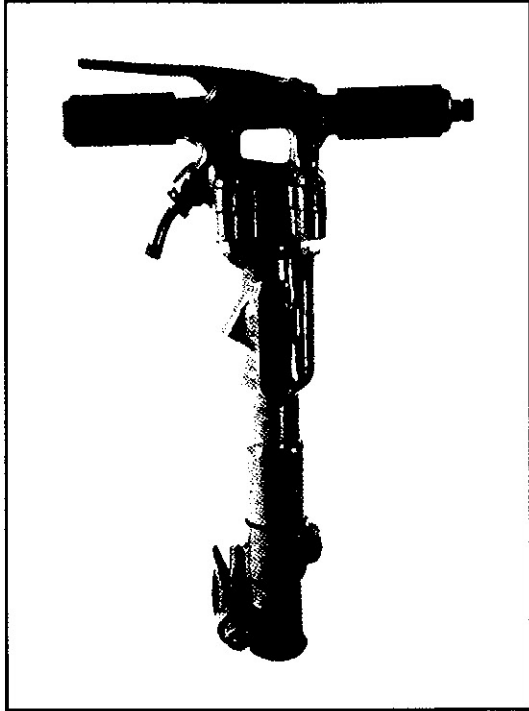


30# Paving Breaker

2

TX30PB

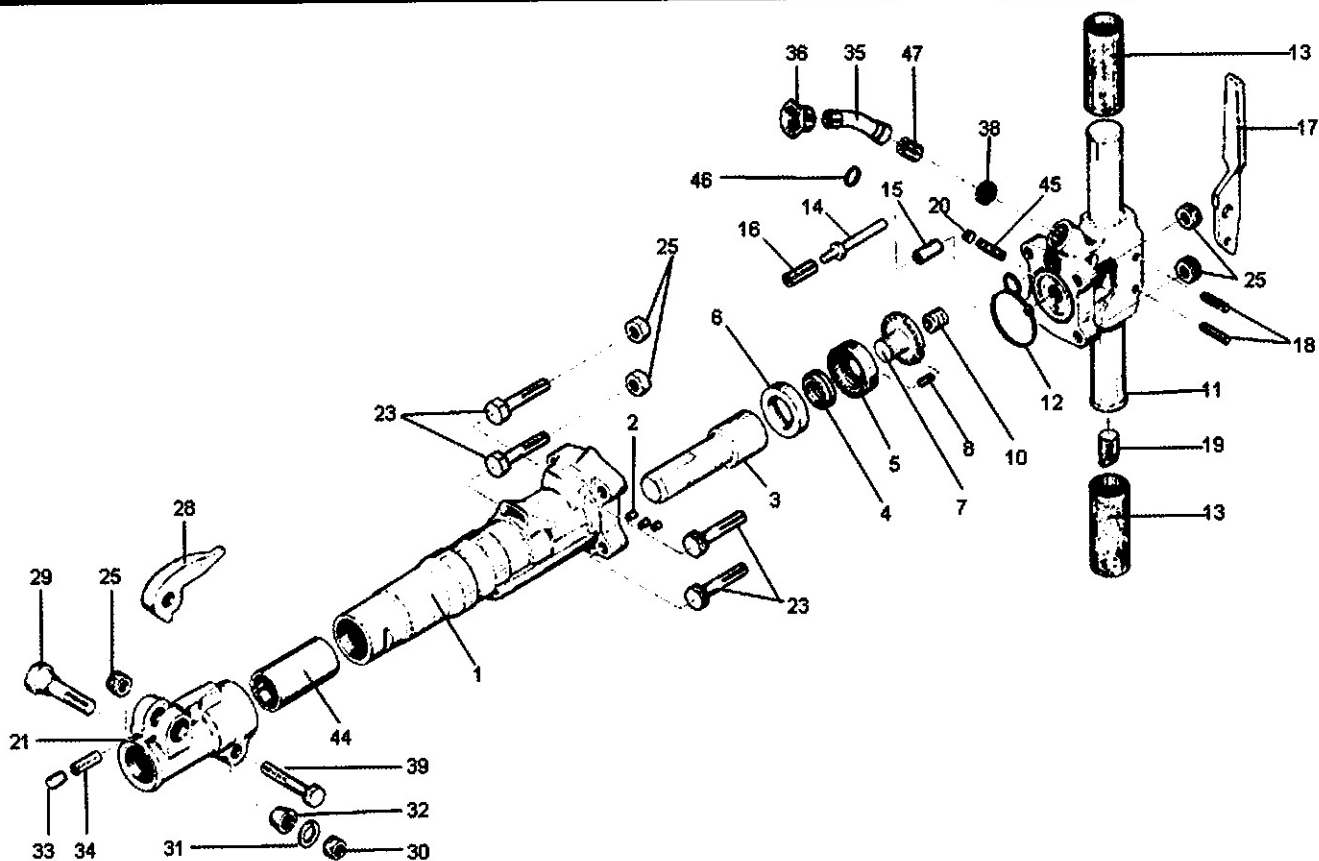


30# PAVING BREAKER

| | | | |
|-----------------------|-------------------------|-----------------------|----------------|
| SPECIFICATIONS | Model# | | TX30PB |
| | Net Weight | 15 kg | 34 lbs |
| | Length | 572 mm | 22.5 in |
| | Bore | 44 mm | 1.75 in |
| | Stroke | 86 mm | 3.375 in |
| | Blows per Minute | 1550 | 1550 |
| | Chuck Sizes | 25 x 108 mm | 1 X 4 1/4 in |
| | | 22 x 83 mm | 7/8 x 3 1/4 in |
| | Air Inlet (NPT) | 10 mm | 3/8 in |
| | Air Consumption* | 1.4 m ³ /m | 49 cfm |

* ESTIMATED

30# Paving Breaker



2

| ITEM# | PART# | DESCRIPTION | ITEM# | PART# | DESCRIPTION |
|-------|--------|--------------------------|-------|--------|---------------------------------|
| 1 | 43026 | Cylinder | NS | 43781 | Fronthead Complete |
| 2 | 421002 | Cylinder Plugs (3)(Opt.) | 23 | 92020 | Backhead Bolt (4) |
| 3 | 43028 | Piston | 24 | 50734 | Bolt Washer (5)(Opt.) |
| 4 | 43038 | Automatic Valve | 25 | 49019 | Bolt Nut (5) |
| 5 | 43037 | Valve Chest | 28 | 43784 | Steel Retainer (Forged) |
| 6 | 43036 | Valve Seat | 29 | 43787B | Retainer Bolt |
| 7 | 43039 | Valve Guide | 30 | 43790 | Retainer Bolt Nut |
| 8 | 43043 | Valve Dowel | 31 | 43143 | Retainer Bolt Lockwasher |
| 10 | 43042 | Backhead Spring | 32 | 43786 | Retainer Bolt Bushing |
| 11 | 43795 | Backhead | 33 | 43788 | Retainer Plunger |
| 12 | 6825 | Backhead "O" Ring (Opt.) | 34 | 43785 | Retainer Plunger Spring |
| NS | 44011 | Backhead Complete | 35 | 43791 | Air Inlet Swivel |
| 13 | 43476 | Handle Grip (2) | 36 | 43792 | Air Inlet Swivel Nut |
| 14 | 99554 | Throttle Valve | 38 | 43044 | Air Inlet Screen |
| 15 | 43395 | Throttle Valve Bushing | 39 | 98424 | Fronthead Bolt + Nut |
| 16 | 43047 | Throttle Valve Spring | 44 | 43025 | Chuck Bushing 1" x 4 1/4" Hex |
| 17 | 43428 | Throttle Lever | | 43024 | Chuck Bushing 7/8" x 3 1/4" Hex |
| 18 | 43393 | Throttle Lever Pin | 45 | 43473 | Oil Control Felt |
| 19 | 43399 | Oil Plug | 46 | 91108 | Inlet Swivel "O" Ring |
| 20 | 68073 | Oil Control Plug | 47 | 47754 | Inlet Swivel Spring |
| 21 | 43783 | Fronthead | | | |