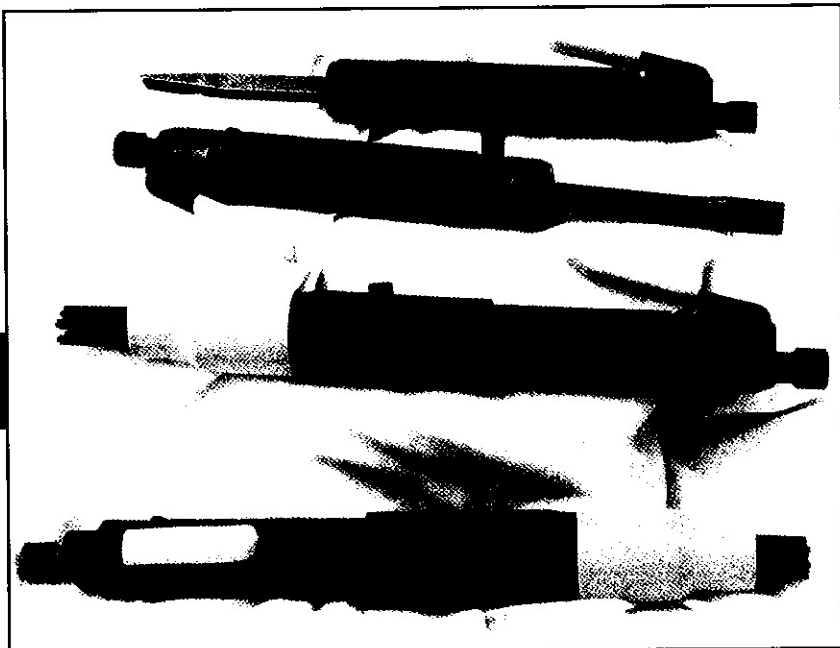


# TX1B Needle / Chisel Scalers

2



- ★ **Made in the U.S.A.**
- ★ **World class value pricing.**
- ★ **Quality equal to or better than competitively made scalers.**
- ★ **Tools have been proven in thousands of applications.**
- ★ **Tens of thousands of these tools are in the field.**
- ★ **Completely convertible from needle to chisel scaler and vice versa.**
- ★ **Parts availability virtually guaranteed with same day shipment.**

### Tool Applications:

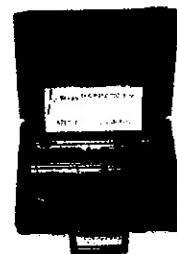
- *De-rusting and cleaning of metals*
- *Peening of welded joints*
- *Cleaning castings*
- *Cleaning welding slag*
- *Removing barnacles*
- *Removing paint, rust and dirt*
- *Chipping stone, concrete and brick*
- *Needle scalers adjust to any surface contour automatically.*

Texas Pneumatic scalers have been proven throughout the industrial job sites, as well as construction and marine repair industry.

### TX1BLTNS-MK Millennium Kit

#### CONTAINS:

- 1 Chrome needle scaler
- 1 Extra set of needles
- 1 632
- 1 633
- 1 634
- 1 Storage / carrying case



## SPECIFICATIONS

	TX1BLTNS	TX1BLTCS
WEIGHT	6 lb. 4 oz.	4 lb. 10 oz.
LENGTH	17" w/5" Ndl.	15" w/Chisel
CFM CONSUMED	12 CFM	12 CFM
BORE	1"	1"
STROKE	1-1/8"	1-1/8"
BPM	4600	4600
INLET	1/4" NPT	1/4" NPT
MIN. HOSE SIZE	3/8"	3/8"
BOXED WEIGHT	7 lbs	6 lbs
BOX SIZE	18" x 2-1/2" x 2"	18" x 2-1/2" x 2"

### STANDARD WELD FLUX SCALERS:

Model TX1B

### STANDARD EQUIPMENT:

- With Needle Scaler: One set 5" Scaler Needles
- With Weld Flux Scaler: One 7" Flat Chisel

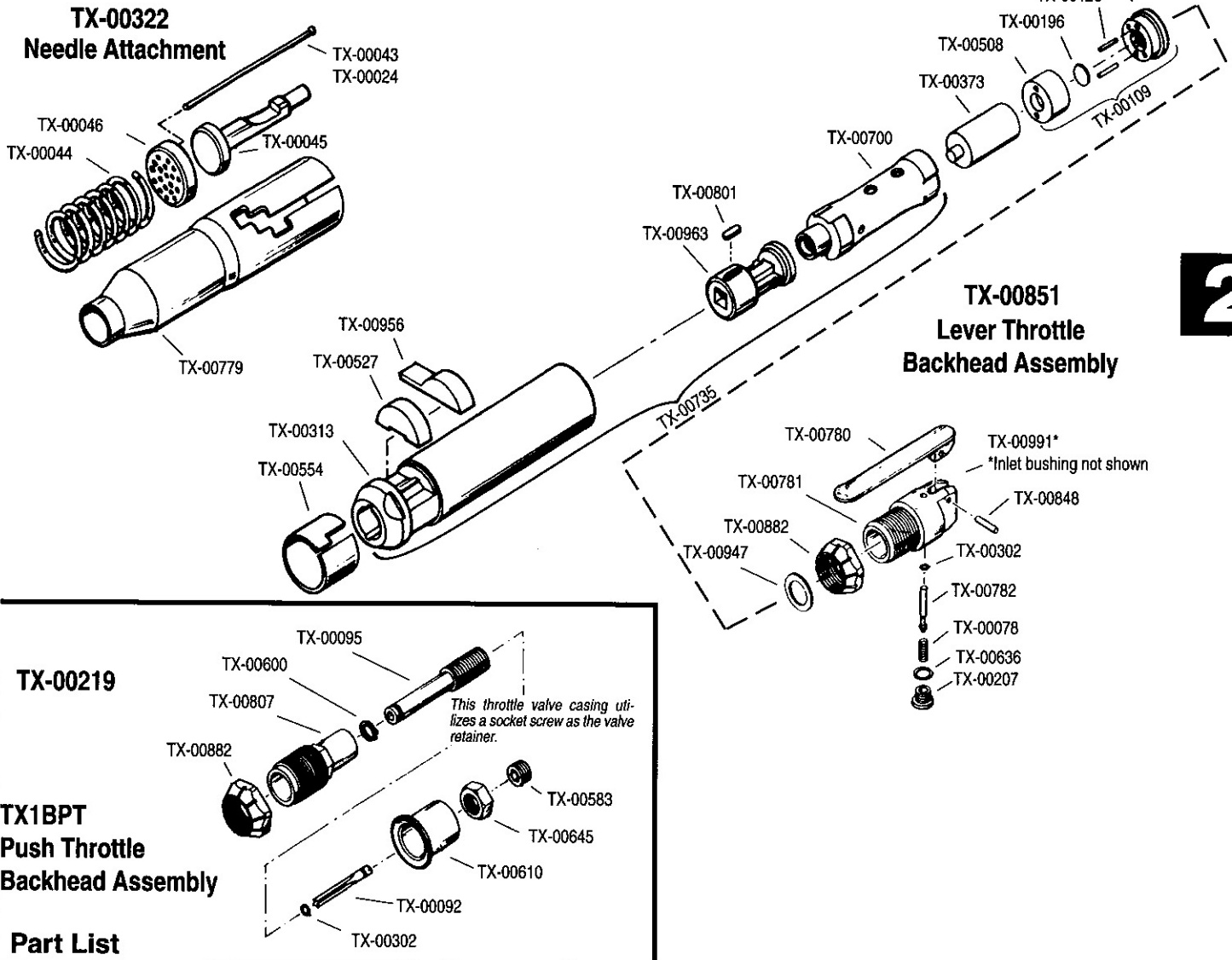
### DESCRIPTIVE SUFFIXES FOLLOWING "B" TO FURTHER DESCRIBE TOOL:

- LT=Lever Throttle
- PT=Push Throttle
- NS=Needle Scaler
- CS=Chisel Scaler

\*For listing of parts, see schematic and parts breakdown page.

# TX1B Needle / Chisel Scalers

## TX1BLTNS / TX1BLTCS Needle/Chisel Scalers

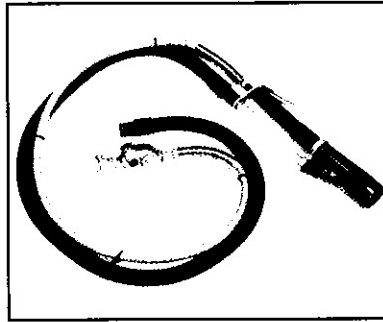
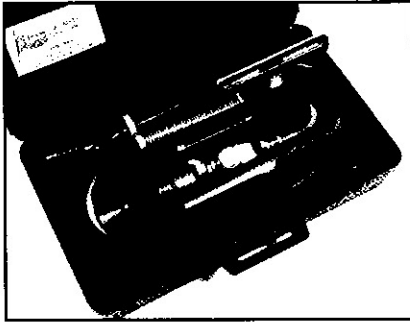


**2**

### Part List

PART #	DESCRIPTION
TX-00024	7" STEEL SCALER NEEDLE
TX-00043	5" STEEL SCALER NEEDLE
TX-00044	NEEDLE SPRING
TX-00045	NEEDLE DRIVER
TX-00046	NEEDLE HOLDER
TX-00047	7" FLAT CHISEL (3/4" W)
TX-00048	6" SPOON CHISEL (1-3/8" W)
TX-00049	6" FLAT CHISEL (1-3/8" W)
TX-00050	7" HARDENED BLANK CHISEL
TX-00051N	12" FLAT CHISEL (3/4" W)
TX-00051W	12" FLAT CHISEL (1-3/8" W)
TX-00052	12" SPOON CHISEL (1-3/8" W)
TX-00054N	18" FLAT CHISEL (3/4" W)
TX-00054W	18" FLAT CHISEL (1-3/8" W)
TX-00055	18" SPOON CHISEL (1-3/8" W)
TX-00078	THROTTLE VALVE SPRING
TX-00092	THROTTLE VALVE (PUSH TYPE)(+TX00302)
TX-00095	THROTTLE VALVE CASING (+TX00583)
TX-00109	VALVE BLOCK ASSEMBLY
TX-00126	VALVE BLOCK DOWEL PIN
TX-00173	VALVE BLOCK BUTTON
TX-00196	FLUTTER VALVE
TX-00207	THROTTLE VALVE CAP
TX-00219	PUSH THROTTLE BACKHEAD ASSEMBLY
TX-00302	THROTTLE VALVE "O" RING
TX-00313	TX1B BARREL
TX-00322	ROUND NEEDLE ATTACHMENT
TX-00373	PLUNGER
TX-00508	VALVE BLOCK
TX-00519	NEEDLE SET (19 - 5" X .125)
TX-00527	RETAINER BUFFER
TX-00554	RETAINER CLIP
TX-00583	SOCKET SCREW - VALVE RETAINER
TX-00600	THROTTLE VALVE SNAP RING
TX-00610	CONTROL VALVE HANDLE
TX-00636	THROTTLE VALVE CAP GASKET
TX-00645	THROTTLE VALVE CASING LOCK NUT
TX-00700	CYLINDER SLEEVE
TX-00719	NEEDLE SET (19 - 7" X .125)
TX-00735	BARREL ASSEMBLY
TX-00779	ROUND NEEDLE TUBE
TX-00780	THROTTLE LEVER (5/16" SLOT)
TX-00781	BARE LEVER TYPE BACKHEAD 5/16"
TX-00782	THROTTLE VALVE (INCLUDES "O" RING)
TX-00801	TOOL NOSE KEY
TX-00807	BARE PUSH TYPE BACKHEAD
TX-00848	THROTTLE LEVER PIN
TX-00851	LEVER TYPE BACKHEAD ASSEMBLY
TX-00882	BACKHEAD LOCK RING
TX-00947	BACKHEAD POSITIONING SPACER
TX-00956	RETAINER
TX-00963	TOOL NOSE
TX-00989	P/T INLET BUSHING 1/4" X 1/4"
TX-00991	L/T INLET BUSHING 3/8" X 1/4"

# Needle Scaler Vacuum Attachments



**3 Models Available**  
TX1BLTNS-VK, TX182-VK,  
& TX456-VK

**2**

- ★ Exceeds OSHA 29 CFR and SOEH for vacuum pick-up tools.
- ★ Flex-Vac (patent pending) nose piece gets you into those impossible corners.
- ★ Requires only 87 CFM vacuum flow and 90 psi operating pressure.
- ★ Currently testing for breathing zone PEL under the action level of 30 ug/m<sup>3</sup>.
- ★ Kits include vacuum attachments necessary for site clean up.
- ★ Can be used with all HEPA vacuum systems (1-1/4" hose).
- ★ Tool exhausts into vacuum stream; lubrication will not affect surface preparation.
- ★ Attachments for other needle scaler models also available.

## SCALER VACUUM ATTACHMENTS

MODEL #	USE WITH MODEL #	DESCRIPTION
TX1BLTNS-VT TX-182-VT TX-456-VT	TX1BLTNS TX-182 TX-456	Includes vacuum attachment with necessary hoses & clamps - needle scaler and hose whip assembly not included.
TX1BLTNS-V TX-182-V TX-456-V	TX1BLTNS TX-182 TX-456	Includes vacuum attachment with necessary hoses & clamps with carrying case - needle scaler and hose whip assembly not included.
TX1BLTNS-VK TX-182-VK TX-456-VK	TX1BLTNS TX-182 TX-456	Includes vacuum attachment with necessary hoses & clamps, carrying case, vacuum accessories (see table below), choice of needle scaler (TX1BLTNS, TX182 or TX456) and TX-1HW hose whip assembly.

VT=Attachment Only

V=Attachment w/Case

VK=Total Kit

(Attachment w/ Case & Accessories)

All needle scalers require 7" needles when using vacuum attachments.

## SCALER VACUUM ATTACHMENT PARTS

DESCRIPTION	PART#	TX1BLTNS-VT	TX1BLTNS-V	TX1BLTNS-VK
		TX-182-VT TX-456-VT	TX-182-V TX-456-V	TX-182-VK TX-456-VK
Vacuum Nosepiece-Specify Make	TXV-001	1	1	1
Nosepiece Clamp w/Hardware	TXV-003	1	1	1
TX1BLTNS w/ 7" Needles	TX1BLTNS	-	-	1
3/4" White/Clear Suction Hose	TXV-004	1	1	1
Suction Hose Support Clamp	TXV-006	1	1	1
1" x 1-1/4" Vacuum Hose Clamp	TXV-007	1	1	1
1-1/4" x 7" Black Vacuum Hose	TXV-008	1	1	2
1-1/4" x 1-1/4" Vacuum Hose Cuff	TXV-009	1	1	3
TX-1HW Whip/Oiler Assembly	TX-1HW	-	-	1
Vac/Air Hose Support Clamps	TXV-010	5	5	5
Case 27-1/2 x 16 x 7" w/ insert	TXV-011	-	1	-
TX-00719 Needle Set 7"	TX-00719	-	-	2
Needle Set 7" Tube w/ Caps	TXV-013	-	-	2
Case 27-1/2 x 16 x 8-1/2" w/ insert	TXV-014	-	-	1
1-1/4" x 1-1/4" Hose Splice	TXV-015	-	-	1
1-1/4" Crevice Tool - Grey	TXV-016	-	-	1
1-1/4" x 3" Rd Dust Brush - Grey	TXV-017	-	-	1
1-1/4" x 5" Floor Tool - Grey	TXV-018	-	-	1
Slide-on Brush for 5" Floor Tool	TXV-019	-	-	1
1-1/4" x 9" Floor Brush - Grey/Metal	TXV-020	-	-	1
1-1/4" x 1-1/4" Black Connector	TXV-021	-	-	3
Telescopic Chrome Wand 20"	TXV-022	-	-	1
1-1/4" Hose x 1-1/2" Tool Cuff	TXV-023	-	-	1
1-1/2" Hose x 1-1/4" Tool Cuff	TXV-024	-	-	1

# Needle / Chisel Scalars

## Other TX1B Models Available:

MODEL #	DESCRIPTION
TX1BPTCS	PUSH THROTTLE CHISEL SCALAR
TX1BPTNS	PUSH THROTTLE NEEDLE SCALAR
TX1BCOCS-NR	COKE OVEN SCALAR WITH NON-REVOLVING BACKHEAD

## Copies of Major Manufacturers' Scalars:

MODEL #	DESCRIPTION
TX456CS	CHISEL SCALAR
TX456NS	NEEDLE SCALAR
TX182CS	CHISEL SCALAR
TX182NS	NEEDLE SCALAR

## Tomato Stake Driver:

MODEL #	DESCRIPTION
TX456TS	TOMATO STAKE TOOL

## Chisels Available for TX1B:



MODEL #	ARROW #	DESCRIPTION
TX-00047	632	7" FLAT CHISEL (3/4" W)
TX-00048	634	6-1/2" SPOON CHISEL (1-3/8" W)
TX-00049	633	6-1/2" FLAT CHISEL (1-3/8" W)
TX-00050	631	7" HARDENED BLANK CHISEL
TX-00051N	632-12	12" FLAT CHISEL (3/4" W)
TX-00051W	633-12	12" FLAT CHISEL (1-3/8" W)
TX-00052	634-12	12" SPOON CHISEL (1-3/8" W)
TX-00054N	632-18	18" FLAT CHISEL (3/4" W)
TX-00054W	633-18	18" FLAT CHISEL (1-3/8" W)
TX-00055	634-18	18" SPOON CHISEL (1-3/8" W)
	635	7" SCRAPER (2" W)

## Needles Available For All Models:

MODEL #	DESCRIPTION
TX-00018	STAINLESS 5"
TX-00019	STAINLESS 7"
TX-00024	7" X .125 STEEL SCALAR NEEDLE
TX-00043	5" X .125 STEEL SCALAR NEEDLE
TX-00057	7" X .078 (2MM) STEEL SCALAR NEEDLE
TX-00058	7" X .117 (3MM) STEEL SCALAR NEEDLE
TX-00059	7" X .157 (4MM) STEEL SCALAR NEEDLE
TX-00119	5" X .125 BERYLLIUM COPPER NEEDLE
TX-00120	7" X .125 BERYLLIUM COPPER NEEDLE

## Scaler Replacement Parts

CP456	CHISEL/NEEDLE SCALAR
P-009876	VALVE PLUG (1/8")
P-041556	THROTTLE LEVER (B)
P-041557	CYLINDER SLEEVE
P-043309	LID VALVE
P-043310	METALLIC CYCLING VALVE
P-050933	CHISEL SLEEVE
P-050934	RETAINING RING
P-070416	STEEL BALL (5/16")
P-073225	7 1/2" FLAT CHISEL (5/8" W)
P-083076	"O" RING (-007)
P-084033	PISTON
P-084034	CASE VALVE CYCLING
P-084037	METALLIC SHIM / .005
P-084038	METALLIC SHIM / .010
P-084043	THROTTLE LEVER PIN
P-084175	6-1/2" FLAT CHISEL (1-3/8" W)
P-084376	6-1/2" SPOON CHISEL (1-3/8" W)
P-088813	CHISEL LOCK RING
P-088815	RUBBER LOCK
P-091582	THROTTLE VALVE
P-091585	VALVE SPRING
P-100144	ANVIL
P-100145	NEEDLE HOLDER
P-100146	19 - 7" X .125 NEEDLE SET
P-100150	NEEDLE SPRING
P-100964	BUFFER HOLDER
P-109271	CYLINDER LOCK NUT
P-109273	BACKHEAD (MODEL B)
P-113695	CYLINDER & RETAINER
P-117630	NEEDLE HOUSING
P-117632	HOUSING CLAMP
P-117633	ALLEN CAP SCREW
P-125736	SPACER (MODEL B)
P-103105	NEEDLE ATTACHMENT
TX456RK	REPAIR KIT
IR 182	CHISEL/NEEDLE SCALAR
NS11-A	HOUSING ATTACHMENT / 5"
NS11-A7	HOUSING ATTACHMENT / 7"
NS11-20	ANVIL
NS11-21	NEEDLE HOLDER
NS11-22	5" X .125 SCALAR NEEDLE
NS11-22-19	19 - 5" X .125 NEEDLE SCALAR
NS11-A24	ROUND NEEDLE HOUSING
NS11-A25	INSERT FOR HOUSING
NS11-27	ANVIL SPRING
NS11-122	7" X .125 SCALAR NEEDLE
NS11-122-19	19 - 7" X .125 NEEDLE SCALAR
PX2-626	THROTTLE VALVE SPRING
ROB1J1-565	1/4" X 1/4" INLET BUSHING
R1-271	PLUNGER LOCK SPRING
R2F-167	"O" RING
W14F-7	7-1/2" FLAT CHISEL (5/8" W)
WF109-A	THROTTLE VALVE CAP
WF14A/6-1/8	6-1/2" SPOON CHISEL (1-3/8" W)
WF14B/6-1/8	6-1/2" FLAT CHISEL (1-3/8" W)
WF163-A	THROTTLE LEVER
WF171-2	VALVE
WF171-3	VALVE SEAT
WF171-4	VALVE CAP
WF171-8	VALVE SPACER
WF171-15	THROTTLE LEVER PIN
WF171-28	RETAINER BALL
WF171-32	DOWEL PIN
WF171-49	THROTTLE VALVE
WF181-5	PISTON
WF181-A10A	CASING ASSEMBLY
WF182-AL160	BACKHEAD ASSEMBLY
WF182-104	RETAINER SLEEVE LOCK RING
WF182-160	BACKHEAD W/O BLOW GUN
WF182-716	RETAINER SLEEVE LOCK PLUNGER
TX182RK	REPAIR KIT

# TX1B Needle / Chisel Scalers

## NEEDLE / CHISEL SCALER Repair Kits

★ *These kits are a convenient way to stock wear parts for the TX1B.*

★ *Especially important if you are in an area where reordering parts is not easily done.*

### TX1B NEEDLE SCALER REPAIR KIT

#### TX1BNSRK INCLUDES:

3	TX-00044	NEEDLE SPRING
1	TX-00045	NEEDLE DRIVER
1	TX-00046	NEEDLE HOLDER
1	TX-00078	THROTTLE VALVE SPRING
2	TX-00126	VALVE BLOCK DOWEL PIN
2	TX-00196	FLUTTER VALVE
1	TX-00207	THROTTLE VALVE CAP
1	TX-00373	PLUNGER
2	TX-00519	5" X .125 NEEDLE SET (19)
3	TX-00527	RETAINER BUFFER
3	TX-00554	RETAINER CLIP
1	TX-00636	THROTTLE VALVE CAP GASKET
1	TX-00782	THROTTLE VALVE
1	TX-00848	THROTTLE LEVER PIN
1	TX-00956	RETAINER

**2**

### TX1B CHISEL SCALER REPAIR KIT

#### TX1BCSRK INCLUDES:

1	TX-00078	THROTTLE VALVE SPRING
2	TX-00126	VALVE BLOCK DOWEL PIN
2	TX-00196	FLUTTER VALVE
1	TX-00207	THROTTLE VALVE CAP
1	TX-00373	PLUNGER
3	TX-00527	RETAINER BUFFER
3	TX-00554	RETAINER CLIP
1	TX-00636	THROTTLE VALVE CAP GASKET
1	TX-00782	THROTTLE VALVE
1	TX-00848	THROTTLE LEVER PIN
1	TX-00956	RETAINER