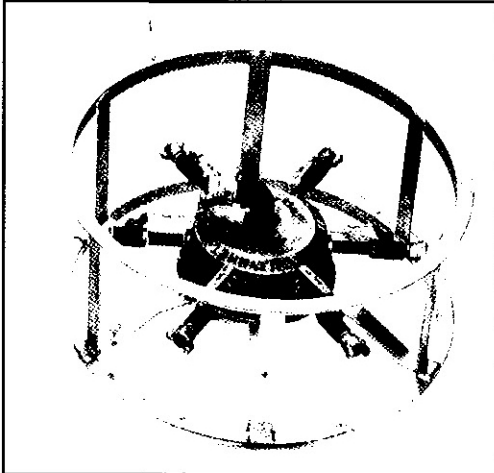


Air Manifolds

1

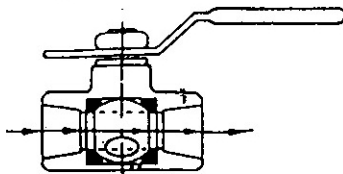


Texas Pneumatic proudly offers the

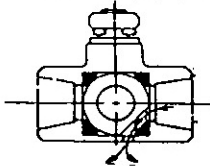
TX-1AMF Air Manifold

- ★ *Conveniently manufactured TO SAVE YOU TIME.*
- ★ *Baffles increase interior surface area for improved condensation collection.*
- ★ *Cage protects the valves and makes it easy to move.*
- ★ *Ball valves control the number of outlets available.*
- ★ *Pressure relief valve provides protection against excessive pressure build-up.*
- ★ *Particulate filters produce clean air at the tool preventing downtime.*

Venting Operation



Valve in open position.
Drain vent shut off.



Valve closed and draining.
Upstream seat stops air flow. Downstream system is vented to atmosphere.

When this valve is shut off for maintenance of pneumatic tool, pressure from valve to tool is automatically drained to atmosphere to prevent accidental operation of the tool, causing possible injury.

SPECIFICATIONS:

MODEL #	TX1AMF
WEIGHT	102 LBS.
DIMENSIONS: Height	15"
Diameter	36"
INLET SIZE	1-1/2"
# OF OUTLETS	6

TX-10017 Air Manifold Filter Kit

Filter Replacement Kit includes parts to refurbish all 6 filters in a Texas Pneumatic Air Manifold.

This kit includes:

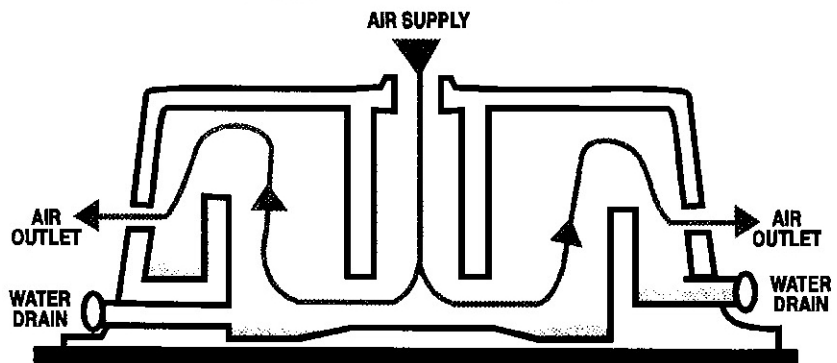
- TX-10013 (6) 40 micron sintered bronze filter
- TX-10014A (6) "O" ring
- TX-10014B (6) Rubber seal
- TX-10015 (6) Spring

The Texas Pneumatic Air Manifold can be used in any industry where there is a need to have multiple outlets of air to supply various pneumatic tools simultaneously. The manifold comes with a 1-1/2" air inlet and can be dispersed through and up to six separate 3/4" Chicago couplings. Each outlet is regulated by a bronze safety lock on/off self-relieving ball valve. For an adequate air supply to each tool, use the formula below:

MANIFOLD APPLICATION FORMULA:

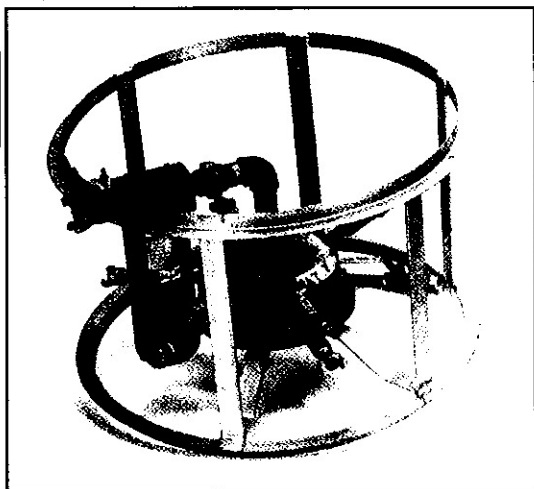
Air Tool Consumption x Number of Tools = CFM Required (CFM)

Unique Water Baffle Design:



Air Manifold with Water Filter

1



Features...

- Arrow 910 CFM water filter
- Internal baffle design
- 6 bronze self-relieving ball valves
- 200 psi A.S.M.E. pressure relief safety valve
- Six 40 micron sintered bronze filters

PARTICULATE FILTERS

Arrow F3 series particulate filters remove harmful oil/water condensate, pipe scale, dirt and rust from your compressed air system. This prevents corrosive damage to compressed air equipment and finished products. Typically, particulate filters are installed upstream of regulators to prevent valve failure. They are also used as pre-filters to oil removing and coalescing filters to insure high efficiency and long element life in applications such as paint spraying, instrumentation and pharmaceuticals.

Each filter is equipped with a highly efficient baffling system for maximum bulk liquid and dirt particle removal. The Arrow heavy-duty, cleanable porous bronze element removes fine particles. Particle removal can be tailored to specific needs with either the 40 or 5 micron bronze element. An optional 3 micron absolute pleated fiber element is also offered for extra-fine particle removal.

The Arrow 3 micron absolute element is a high efficiency filter element with solid particulate removal in the 90% efficiency range down to .28 microns. The Beta efficiency rating is 99.5%. The element is constructed of pleated cloth fibers and rib supports for strength. Both ends have urethane 50 durometer elastomer seals to insure particulate entrapment. The pleated fiber design gives this element 10 times the surface area of similar nominal rated elements. This increased surface area provides a long element life and the same pressure drop characteristics as our current 40 micron

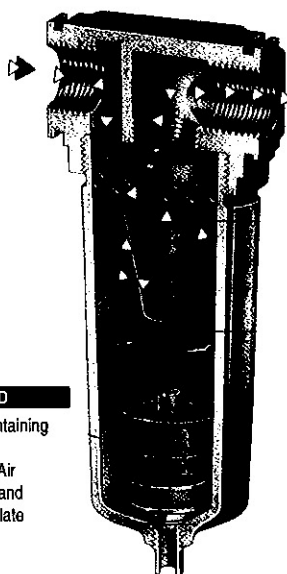
Texas Pneumatic proudly offers the

TX-1AMF-WF Air Manifold with Water Filter

- ★ *Water filters (particulate filters) produce clean, dry air at the tool preventing rust and clogging which reduces downtime of tools and saves money.*
- ★ *Conveniently manufactured to save you time.*
- ★ *Cage protects valves and makes it easy to roll around.*
- ★ *Ball valves control the number of outlets available.*
- ★ *Pressure relief valve provides protection against excessive pressure buildup.*

element. When used as a pre-filter to a coalescing filter, it will increase the life of the coalescing element by 4 to 6 times.

IMPORTANT: Particulate filters only remove water in its liquid state. Water vapors will pass through a particulate filter and condense into liquid as the temperature in the air line drops. Liquid condensation may have a harmful effect on certain applications. We recommend installing an Arrow dryer for complete removal of liquid condensation from the system.



LEGEND

- Air Containing Liquid
- Clean Air
- Liquid and Particulate

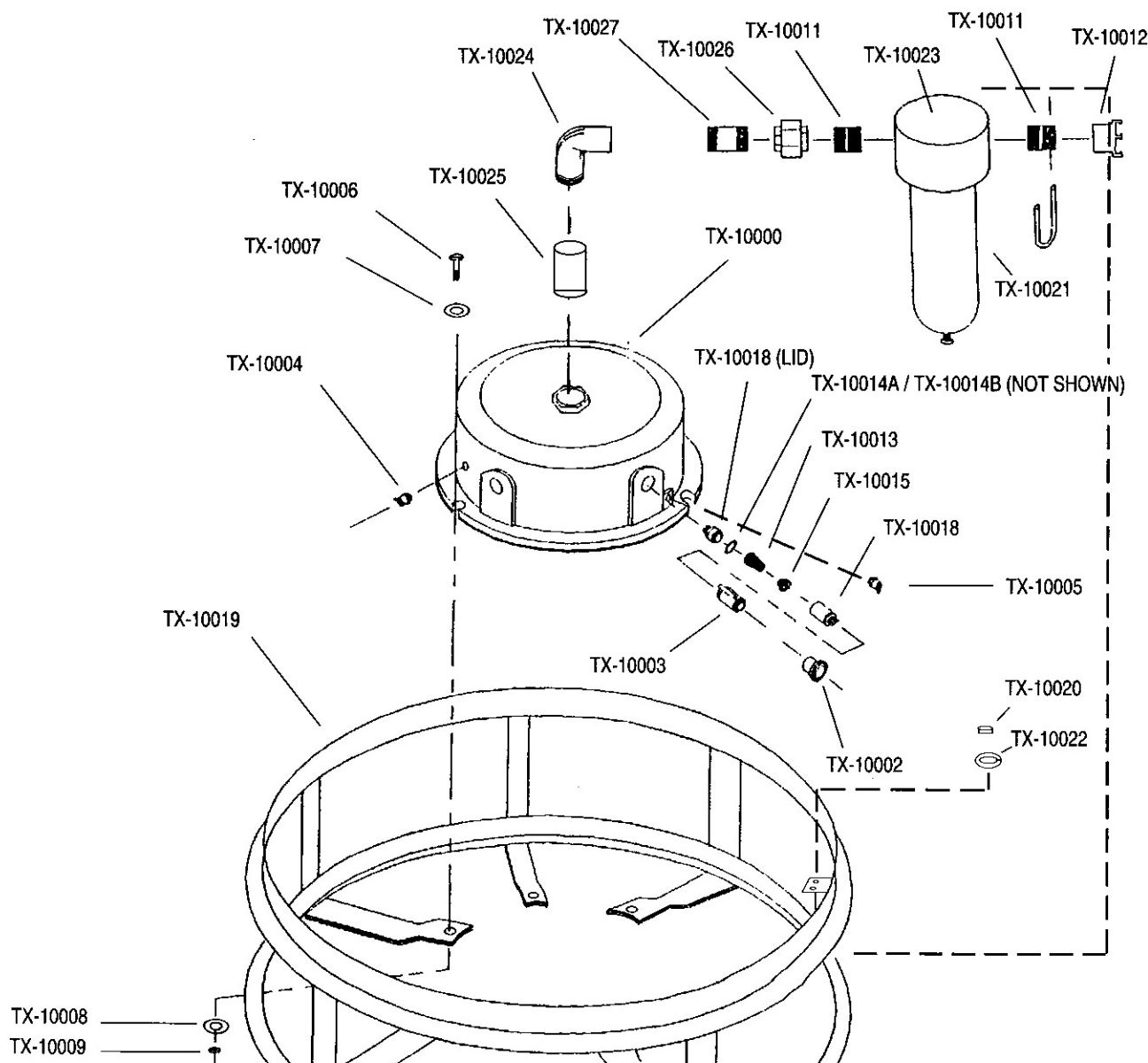
SPECIFICATIONS:

MODEL #	TX1AMF-WF
WEIGHT	114 LBS.
DIMENSIONS: Height	22.5"
Diameter	36"
INLET SIZE	1-1/2"
# OF OUTLETS	6

Air Manifold with Water Filter

TX1AMF-WF Air Manifold with Water Filter

1



Part List

PART #	DESCRIPTION		
TX-10000	MANIFOLD CASTING	TX-10017	FILTER REPLACEMENT KIT
TX-10002	3/4" MPT X CROW'S FOOT (STEEL)		CONTAINS TX-10013, TX-10014 A & B,
TX-10003	BALL VALVE	TX-10015	(6 OF EACH)
TX-10004	1/4" POP-OFF VALVE	TX-10018	FILTER HOUSING W/LID
TX-10005	1/4" DRAIN COCK	TX-10019	LARGE MANIFOLD CAGE
TX-10006	1/2" - 13 X 1-3/4" GALVANIZED BOLT	TX-10020	1/4" GALVANIZED NUT
TX-10007	1/2" GALVANIZED FLAT WASHER	TX-10021	1/4" U-BOLT
TX-10008	1/2" GALVANIZED LOCK WASHER	TX-10022	1/4" GALVANIZED LOCK WASHER
TX-10009	1/2" - 13 GALVANIZED HEX NUT	TX-10023	910 CFM WATER FILTER
TX-10011	1-1/2" GALVANIZED ALL THREAD NIPPLE (SCH. 80)	TX-10024	1-1/2" GALVANIZED EL. (SCH. 80)
TX-10012	1-1/2" 4 PRONG CROWS FOOT	TX-10025	1-1/2" X 7-1/2" GALVANIZED NIPPLE (SCH. 80)
TX-10013	SINTERED BRONZE FILTER	TX-10026	1-1/2" GALVANIZED UNION (SCH. 80)
TX-10014A	LARGE "O" RING	TX-10027	1-1/2" X 2-1/2" NIPPLE (GAL SCH 80)
TX-10014B	INTERNAL RUBBER SEAL		
TX-10015	SPRING		